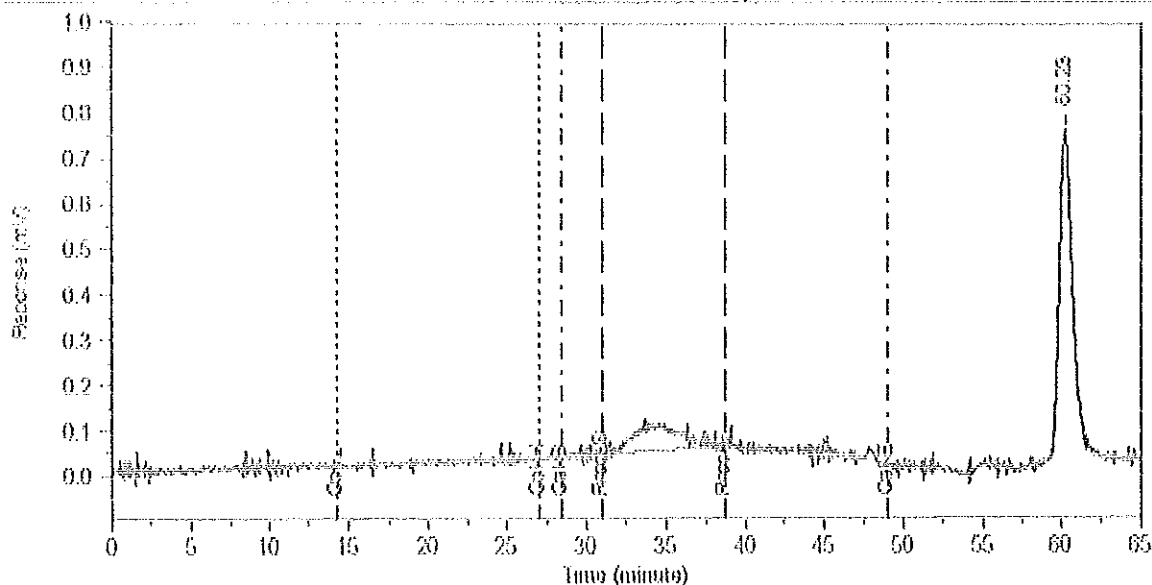


BEC Report



Sample Name: ant's sample/s hua samples 1,2,5
 Acquired from Chrom1 - Det1B via port 2 on 4/26/01 03:11:51pm by sl
 RI data

*Stas' sample # 1
 From his last ice
 experiment*

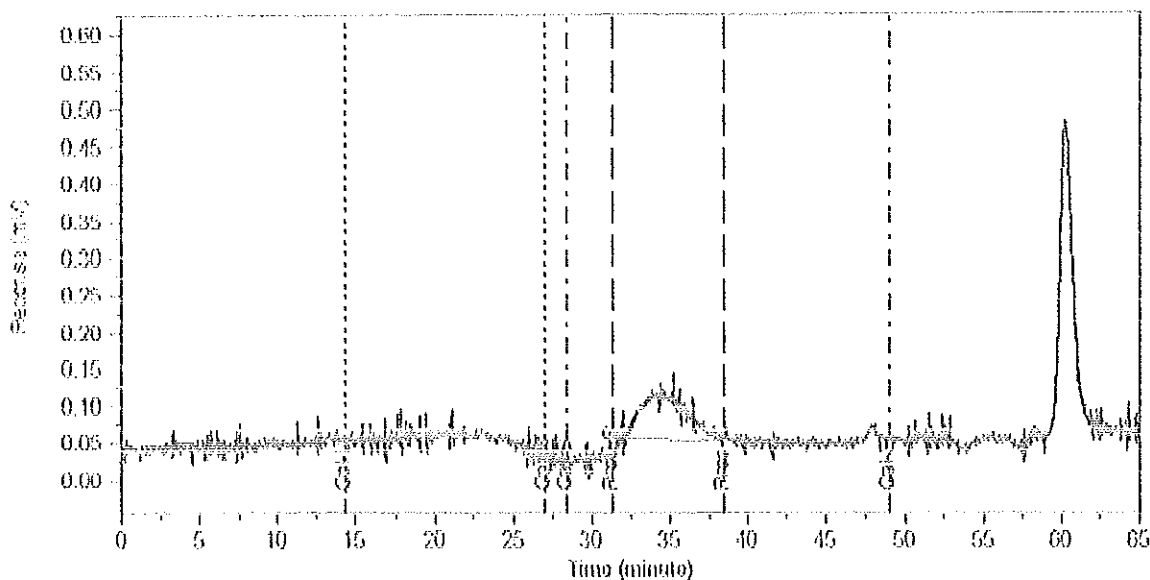
Data File: C:\CPWIN\DATA\ASL426R.02R
 Date Stamp: 4/26/01 03:11:50pm
 Method File: C:\CPWIN\DATA\PIBRACQ.MET
 Version 6, Date Stamp: 1/25/01 03:28:40pm
 Calibration File: C:\CPWIN\DATA\PIB.BEC
 Version 129, Date Stamp: 3/12/01 12:59:42pm
 Run Time = 65.0 min Sample Rate = 1.0 per sec.
 Process Range:
 from 31.1035 min (MW = 231,884) to 38.9094 min (MW = 7,301)
 Baseline:
 from 31.218 min

Molecular Weight
 Number-Average Molecular Weight: $M_n = 33,724.1$
 Weight-Average Molecular Weight: $M_w = 43,517.6$
 Polydispersity Index (Mw/Mn): $P.I. = 1.290$
 Z-Average Molecular Weight: $M_z = 53,860.6$

Molecular Weight Slice Table
 Slice# Start MW Sol End MW Sol Start MW Actual End MW Actual Weight% Mob%

Peak Molecular Weight Table
 Peak# Start End Peak RT Area Mob% Peak MW Mn Mw Mz

SBC Report



Sample Name: null's sample/s linn samples1,2,5
 Acquired from Chrom1 -> Det1B via port 2 on 4/26/01 04:23:01pm by sl
 RI data

Data File: C:\CPWIN\DATA\SL426R.03R
 Date Stamp: 4/26/01 04:23:00pm
 Method File: C:\CPWIN\DATA\PIBRACQ.MET
 Version 6, Date Stamp: 1/25/01 03:28:40pm
 Calibration File: C:\CPWIN\DATA\PIB3.SBC
 Version 129, Date Stamp: 3/12/01 12:59:42pm
 Run Time = 65.0 min Sample Rate = 1.0 per sec.
 Process Range:
 from 31.4684 min (MW = 188,954) to 38.6369 min (MW = 8,179)
 Baseline:
 from 31.451 min

Stees' sample #2
 From his last ince
 experiment

Molecular Weight

Number-Average Molecular Weight: $M_n = 30,183.1$
 Weight-Average Molecular Weight: $M_w = 45,549.3$
 Polydispersity Index (Mw/Mn): $P.I. = 1.509$
 Z-Average Molecular Weight: $M_z = 65,296.6$

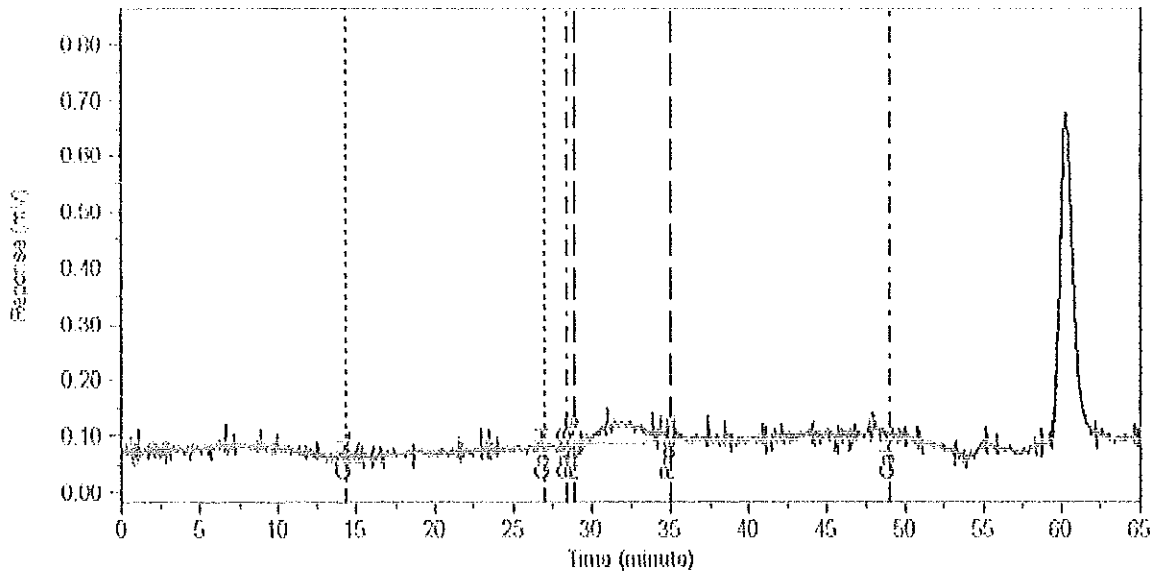
Molecular Weight Slice Table

Slice#	Start MW %	End MW %	Start MW Actual	End MW Actual	Weight%	Mole%
--------	------------	----------	-----------------	---------------	---------	-------

Peak Molecular Weight Table

Peak	Start	End	Peak RT	Area	Weight%	Peak MW	Mn	Mw	Mz
------	-------	-----	---------	------	---------	---------	----	----	----

SEC Report



Sample Name: ant's sample/s hua samples 1,2,5
 Acquired from Chrom1 -> Det1B via port 2 on 4/26/01 05:34:11pm by sl
 RI data

Data File: C:\CPWIN\DATA\1\SL1426R.04R
 Date Stamp: 4/26/01 05:34:10pm
 Method File: C:\CPWIN\DATA\1\PIBRACQ.MET
 Version 6, Date Stamp: 1/25/01 03:28:40pm
 Calibration File: C:\CPWIN\DATA\1\PIB.SEC
 Version 129, Date Stamp: 3/12/01 12:59:42pm

*Stee's sample #5
 From his last fuel
 experiment.*

Run Time = 65.0 min Sample Rate = 1.0 per sec.
 Process Range:
 from 29.0465 min (MW = 202,108) to 35.1232 min (MW = 31,878)
 Baseline:
 from 28.803 min

Molecular Weight

Number-Average Molecular Weight: *Mn* = 103,605.8
 Weight-Average Molecular Weight: *Mw* = 179,531.5
 Polydispersity Index (Mw/Mn): *P.I.* = 1.733
 Z-Average Molecular Weight: *Mz* = 303,692.7

Molecular Weight Slice Table

Slice#	Start MW Sst	End MW Sst	Start MW Acted	End MW Acted	Weight%	Mole%
--------	--------------	------------	----------------	--------------	---------	-------

Peak Molecular Weight Table

Peak	Start	End	Peak RT	Area	Weight%	Peak MW	Mn	Mw	Mz
------	-------	-----	---------	------	---------	---------	----	----	----